



**airstream s200**  
AirPlay® Sound System



## Contents:

Contents:	1	Playing via Bluetooth	11
Thank You for your Purchase	1	Playing and Charging via the USB	11
Introduction	2	Play Another Device Using the 3.5mm Aux Input	12
S200 Capabilities	2	Play Another Device Via DLNA	12
What's in the box	2	Firmware Update	13
AirPlay Compatibility	2	Automatic Notification of Firmware Update	13
USB Compatibility	2	USB Firmware Update	13
The S200	3	Web Browser Firmware Update	14
Getting Ready to Free Your Music	4	Checking Firmware Version	15
Connecting the Power	4	LED Colour Matrix	16
Turning on for the First Time	4	LED Flashing Patterns	16
Airstream Direct	4	Specs	17
Airstream Direct to AirPlay	5	Trouble Shooting	18
Connecting to a Wi-Fi Network	5	Unable to Connect to the Wireless Network	18
What is required?	5	No Sound	18
Option 1:	5	The S200 is Nonresponsive	18
Option 2:	6	No Sound through Bluetooth	18
Via iOS-Device	7	Occasional Breaking up of AirPlay Music Playback	18
Via Laptop/ PC/ Mac	8	No AirPlay Icon on my iTunes Host Device	18
Wall Mounting	9	AirPlay Connection Failed with Mac or PC	18
FREE YOUR MUSIC	10	Factory Reset	19
Use Airplay from your iOS-device	10	Owner Information	19
Using AirPlay from iTunes	10		

## Thank You for your Purchase

Congratulations on purchasing Monitor Audio's Airstream S200. Welcome to the latest way to "Free Your Music" anywhere in your home wirelessly from an AirPlay compatible device or iTunes on your PC or Mac. Added options of DLNA compatibility and the option for Bluetooth streaming on top of this means its never been easier!

The S200 is the latest instalment of the Airstream range, taking you on the amazing journey of wireless multi room music entertainment and enjoyment.

Register your product now!!!! For extra peace of mind, news and the opportunity to win products from Monitor Audio, don't forget to register your S200 at <http://www.monitoraudio.co.uk/support/register/>

The Airstream S200 will provide many years of listening pleasure.

**FOR FURTHER INFORMATION ON MONITOR AUDIO PLEASE GO TO [WWW.MONITORAUDIO.COM](http://WWW.MONITORAUDIO.COM)**

## Introduction

AirPlay is now an integral part of Apple's iOS. Monitor Audio have used 40 years of knowledge to produce a TRUE hifi, AirPlay enabled speaker system. Whether using Airstream Direct, streaming via a wireless router or playing your music collection from PC or MAC, the S200 is the way to "Free Your Music".

## S200 Capabilities

- Stream audio from an iOS-device using Airstream Direct without the need of a wireless router.
- Stream audio from an iOS-device via Wi-Fi to the S200 connected to the same network.
- Choose which AirPlay device you want to stream to from your iOS-device when there are multiple Airstream devices on your network.
- Stream audio by Wi-Fi from any PC or Mac using iTunes (version 10 or later) connected to the same wireless network as the S200.
- Stream audio from any PC or Mac to multiple Airstream devices using iTunes by Wi-Fi.
- Stream audio from a DLNA compatible device or App.
- Stream audio from any paired Bluetooth devices.

## What's in the box

- S200
- Mains lead (region specific)
- Quick Start Guide
- Safety Instructions

## AirPlay Compatibility

To stream wirelessly to the S200 using AirPlay (not Airstream Direct), you will need the following:

- A Wi-Fi certified router (Wireless 802.11 b/g class only)
- A host for your music (iPhone/ iPad/ iPod Touch running iOS 4.3 or later, or a PC/ Mac with iTunes 10 or later)

Compatible AirPlay devices are listed below:

- iPad Mini
- iPad Air
- iPad 4
- iPad 3
- iPad 2
- iPad
- iPhone 5S
- iPhone 5C
- iPhone 5
- iPhone 4S
- iPhone 4
- iPhone 3GS
- iPod Touch 5th Generation
- iPod Touch 4th Generation
- iPod Touch 3rd Generation
- iPod Touch 2nd Generation

## USB Compatibility

Below is a list of devices that will play music back via the USB. Each will charge while connected to the S200 (when not in standby mode) with the exception of the iPad models.

- All devices listed previously in the 'AirPlay Compatibility' list (excluding iPads)
- iPhone 3G
- iPod Touch
- iPod Classic
- iPod Nano 5th Generation
- iPod Nano 4th Generation
- iPod Nano 3rd Generation
- iPod Nano 2nd Generation
- iPod Nano



1. **Standby.** Either puts the S200 into standby or wakes it from standby. When woken from standby it will start in the previously selected input.
2. **Informative LED.** Will illuminate different colours and flash in various sequences to identify the current state of the S200 (refer to page 16 for the key and explanations behind each of these).
3. **Volume up.** Increases the volume level of playback.
4. **Volume down.** Decreases the volume level of playback.
5. **Wi-Fi input.** Switches between Airplay/ DLNA and Airstream Direct modes. A long press will enter Airstream Connect mode.
6. **Input toggle.** Scrolls through the available inputs in the order of Airplay/ DLNA Source > Bluetooth > Aux.



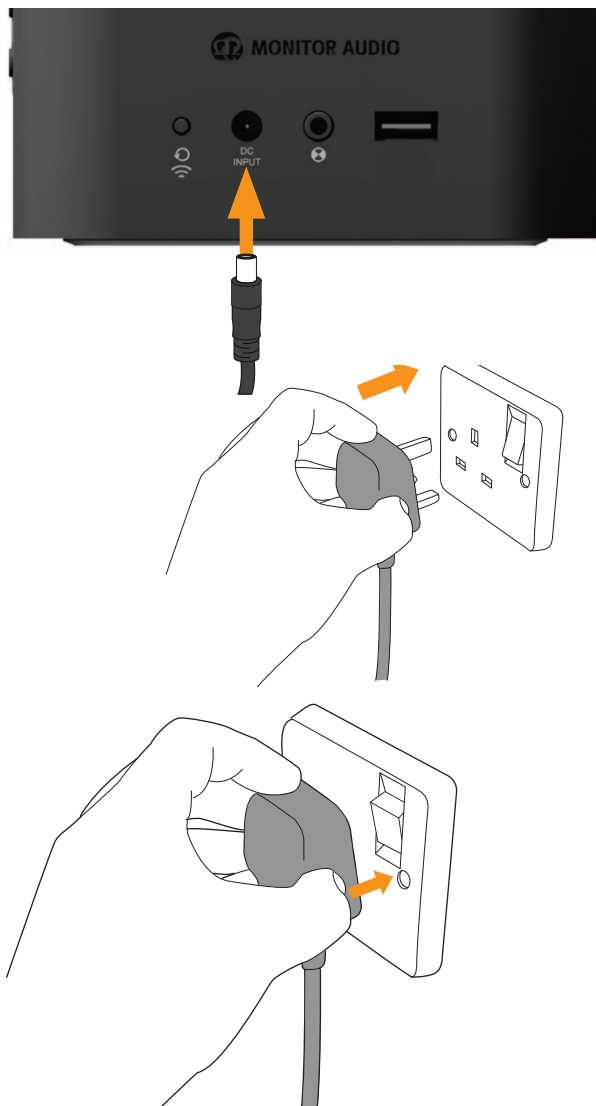
7. **Wi-Fi Sharing/ Factory Reset button.** This button also serves two purposes: A short press is required when connecting the S200 to a wireless network via the USB method. Press and hold for 12 seconds to perform a factory reset.
8. **Mains power input.** Connect the supplied mains lead here.
9. **Auxiliary input.** This is used to connect an additional device via a 3.5mm stereo jack lead (not supplied).
10. **USB input.** Connect an iPod, iPhone, iPad via the Apple USB cable (not supplied) for music playback of devices that are not AirPlay enabled. Also used for connecting the S200 to a wireless network, refer to page 5. Devices can also be charged via the USB, but the S200 needs to be out of standby mode.
11. **ABR.** Auxillary Bass Radiator.

## Getting Ready to Free Your Music

### Connecting the Power

**IMPORTANT:** Please follow the following instructions in sequence.

Connect the mains lead to the back of the S200, connect to wall socket and where applicable turn on



### Turning on for the First Time

When turning on from standby for the first time (or after an update), the S200 will go through an initial boot up procedure. whereas the LED will flash blue rapidly and, because it is not connected to a network yet, it will go into Aux mode by default.

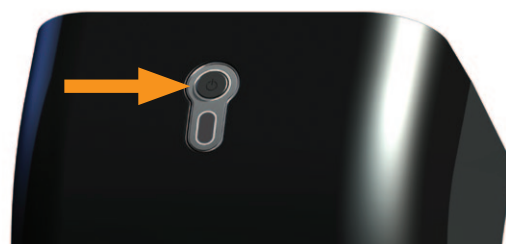


## Airstream Direct

To “Free Your Music” before even connecting the S200 to a wireless network, or if you don’t have a wireless router then use the S200 in Airstream Direct mode to enjoy the freedom of wireless music right out of the box.

Airstream Direct means you can stream from your compatible iOS Device, PC or Mac straight to the S200 without the need for a wireless network/ router. To Free Your Music and activate this mode creating a wireless network solely between the S200 and the iOS-device, follow the steps below:

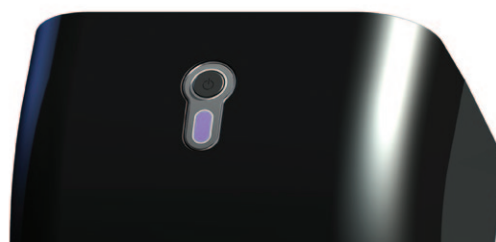
1. Turn on the S200 on from standby.



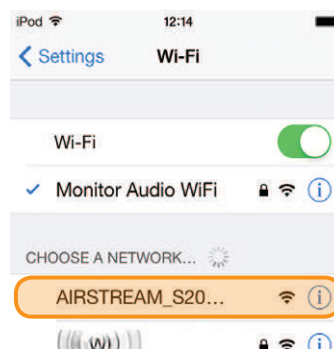
2. When the S200 has booted up, press the Wi-Fi input button on the side of the S200 (item 5 on page 3).



3. The LED on the front of the unit will flash purple and then solid purple.



4. On the iOS device go to the ‘Settings’ app and then into ‘Wireless’. Here you will be able to see ‘AIRSTREAM\_S200...’ listen under the available wireless networks, select this.



### HINT

If the Airstream S200 isn't one of the listed networks, press the home button and try again. It sometimes takes a few seconds for the network to become visible.

5. A tick will appear next to the Wifi Network on the iOS display and your ready to free your music! To use Airstream Direct from a PC or Mac, please refer to page 8 for instruction on connecting to the S200.

## Airstream Direct to AirPlay

### HINTS

If a telephone call is received while in Airstream Direct mode, music will pause and restart when the call is ended.

While in Airstream Direct mode, cellular data will not function. So, iMessage, emails and mobile internet will not function simultaneously.

More than one device can be connected in Airstream Direct mode, but only one device can play music at a given time.

It is possible to toggle between Airstream Direct and conventional AirPlay simply by pressing the Wi-Fi input button on the side of the S200 (refer to page 3).

It is possible to connect a Wi-Fi enabled PC or Mac to the S200 via Airstream Direct. You do this in the same way as connecting an iOS device except you use the PC/ Mac's Wi-Fi network selection tool.

1. To switch between Airstream and Airstream Direct Modes press the Wi-Fi input button on the side of the S200 (item 5 on page 3).



2. The LED will then flash blue as it is trying to connect to a wireless network. When connected it will turn solid blue. If this hasn't been set up yet, it will change from flash pattern #2 to flash pattern #1. Refer to page 5 for instruction on connecting it to the Wi-Fi network and to page 16 for information on the flash patterns.

## Freeing Your Music Connecting to a Wi-Fi Network

There are a couple of different ways you can register the S200 onto the Wi-Fi network. One method connects the iPhone or iPod Touch directly to the S200 using the Apple supplied USB lead, while the second uses the S200's web portal via a PC, Mac or iOS-device.

### What is required?

To connect the S200 to a Wi-Fi network you will need to have the following:

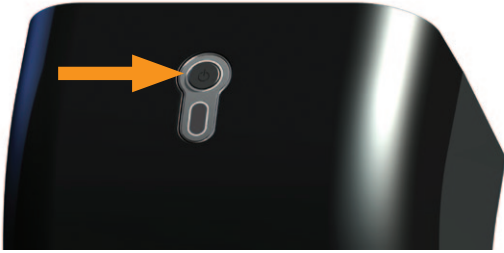
- A Wireless router.
- For Option 1, either an iPod Touch or iPhone and the Apple supplied USB lead.
- For option 2, either a PC, Mac, iPod Touch or iPhone connected wirelessly to the network. The PC/ Mac must be connected wirelessly.
- Airstream S200

### Option 1:

This is the easier of the two processes. It uses the wireless network security information stored on the iOS device to connect to and gain access to the network. All you need is a compatible iPod Touch or iPhone running iOS5 or above. A list of compatible devices for this method of connection can be found below:

- iPhone 5S
- iPhone 5
- iPhone 4S
- iPhone 4
- iPhone 3GS
- Ipod Touch 5th Generation
- iPod Touch 4th Generation
- iPod Touch 3rd Generation
- iPod Touch 2nd Generation

1. Turn on the S200 from standby. The LED on the front will flash blue, firstly in pattern 2 then change to red, pattern 1.



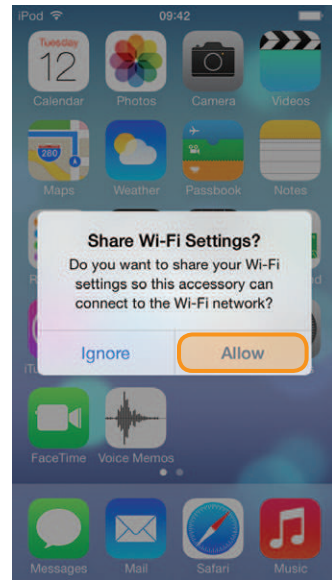
2. Connect the iOS device via USB lead to the S200.



3. Press the Wi-Fi sharing button on the back of the S200 (item 7 on page 3).



4. A prompt will appear on the screen of the iOS-device. This is just asking if you want to allow the device to share the security data with the S200. Press "Allow".



5. The LED will then start to flash blue as per Pattern #2 and turn solid blue when connected to the Wi-Fi network.



6. When the LED is solid blue, remove the USB lead from the device and the S200. You are now able to start playing music via AirPlay.  
You will not be able to play music wirelessly via AirPlay with the USB lead still connecting the iOS Device and the S200.
7. Refer to page 10 for instruction on playing music via AirPlay.

**HINT**

If you face problems connecting the S200 using this method, try using the web portal via the PC/ Mac or the iOS device.

**Option 2:**

Using this method of connection you need either a wireless enabled PC/ Mac or an iPod Touch or iPhone running iOS5 or later.

This method of connectivity involves manually entering the wireless network name (SSID) and security information (WEP Key) into the S200's web portal from either the computer or iOS-device via a temporary wireless network.

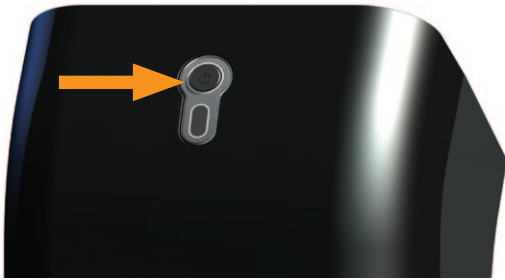


### HINT

Make a note of the name of the wireless network (SSID) that you are connecting to and also the security information (WEP, WPA or WPA2) to ensure the seamless connection of the S200 to the wireless network.

## Via iOS-Device

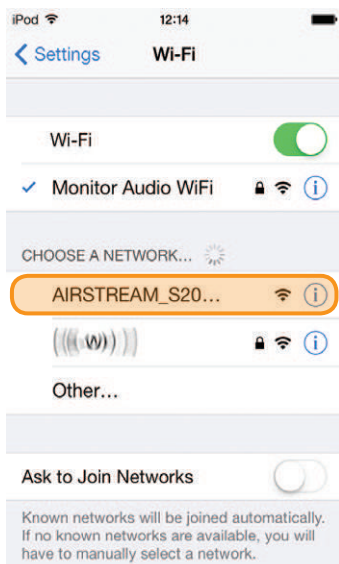
1. Turn the S200 on from standby mode. The LED on the front will flash blue, firstly in pattern #2 then change to solid green (Auxiliary input).



2. Press the Wifi input button (item 5 on Page 3) for approximately 12 seconds. The LED on the front flashes white (Pattern #3).



3. On the device, go to Settings, then Wi-Fi.
4. In the list of available networks you will see Airstream Connect. Select this. When it has been ticked, press the home button.

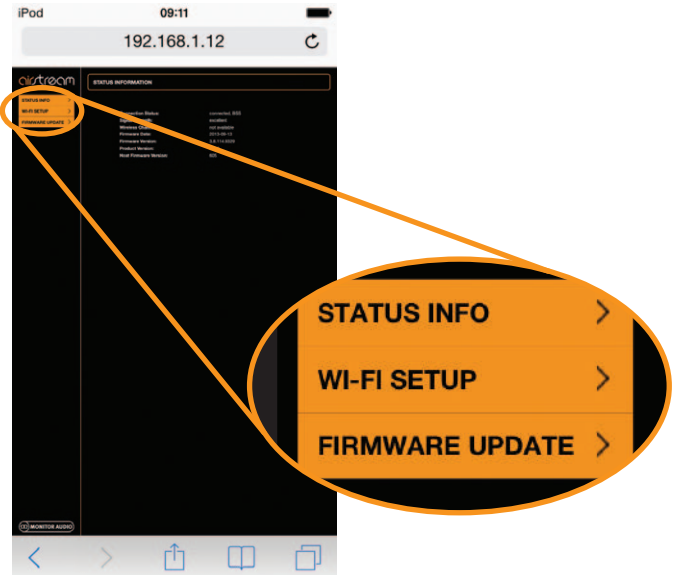


5. Now open up Safari on your Device. Enter the IP address 192.168.1.12 into your address bar.

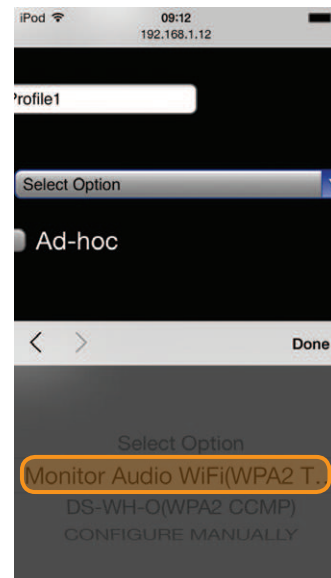
### HINT

If the IP address 192.168.1.12 doesn't work, restart the S200 and press the home button on the device and then retry steps 4 & 5.

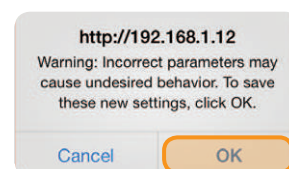
6. The S200's portal page will now be displayed. Select WiFi Setup from the list on the left hand side.



7. Select the SSID (wireless network) you wish to connect to and enter the appropriate security details, press save and then press the home button.



8. There will be a warning pop up appear, just press OK.



Return your device to the original Wi-Fi network so that you can stream your music.

1. Go to Settings, then Wi-Fi.
2. Select your Wi-Fi network.
3. When the tick appears next to your network, press the Home button.
4. To start playing music via AirPlay please refer to page 11.

## Via Laptop/ PC/ Mac

### HINT

The Laptop, PC or Mac must be wireless enabled with wireless turned on.

1. Turn the S200 on from standby mode. The LED on the front will flash blue, firstly in pattern #2 then change to solid green (Auxiliary input).



2. Press and hold the Wi-Fi input button (item 5 on Page 3) for approximately 12 seconds until the LED on the front flashes white (Pattern #3).



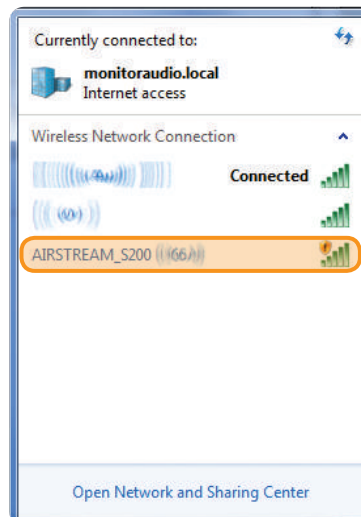
3. On the Laptop/ PC, go to the Wireless network selection tool. For Windows Operating System go to step 4, for Mac Operating System go to step 6.

### HINT

On a Windows 7 Machine, click on the Wi-Fi strength indicator in the bottom right hand corner. If it is hidden, click on the little up arrow.

4. In the list will be your network (probably with "Connected" next to it), and any other wireless networks within range. One of them will be AIRSTREAM\_S200\*\*\*\*\* (where the 6 \*'s are the last 6 digits of the S200's unique Mac Address).

5. Click on AirstreamConnect, and then the Connect button. After a few seconds, you will be connected to the Airstream Connect wireless network.



Continue to step 7.

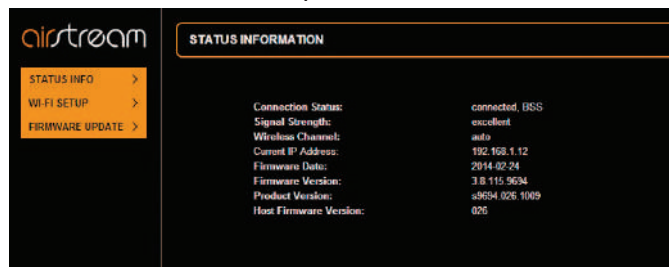
6. On a Mac, click on the wireless network signal strength indicator located in the bar at the top of the desktop.



### HINT

With both Windows and Mac OS's, if AIRSTREAM\_S200 isn't displayed, come out of the selection window and then try again after a few seconds.

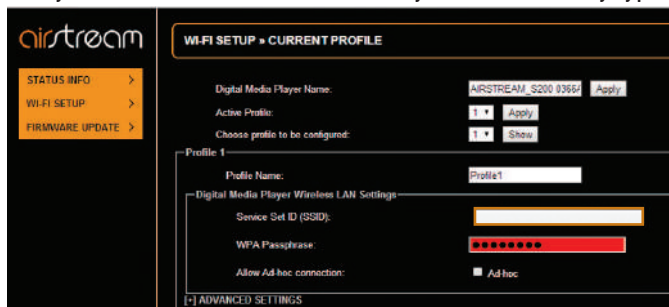
7. On the computer, open your web browser and in the address bar at the top of the page, type in the following address to load the Airstream web portal: 192.168.1.12.



- Click on Wi-Fi Setup on the left hand side of the page. On this page, you will see the details of the S200 and the "Profile" of the wireless network you are about to connect to.

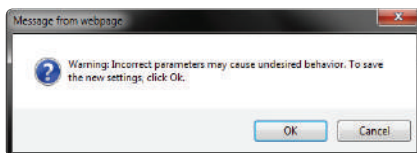


- Click the drop down arrow to select the "Service Set ID" (SSID). In the list should be your wireless network. Select your network and enter the WEP Key (or other security type).

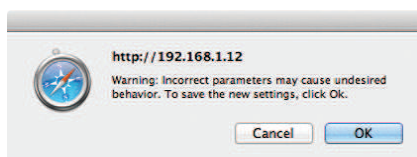


- Click Apply. When you do, a warning pop up will be displayed, click OK.

Windows pop up:



Mac pop up:



- After clicking the OK button on the pop up, there will be no other visible indication on your browser that the S200 is connected to the network.

The LED on the S200 will flash blue while it is establishing a connection to the wireless network and then change to the previous input mode once it has been connected. This will be indicated by the LED.

To select AirPlay, press the input toggle button (item 6 on page 3) until the LED is blue.

- Remember to return to the Available Wireless Networks list on your computer and reselect your home Wireless Network.
- To start streaming to the S200 from your PC, Mac or iOS device, please refer to page 10.

## HINTS

If the LED flashes red slowly (pattern #1), then it has failed to connect. You will have to repeat the above steps to try again.

If it still flashes red slowly after repeating the above steps, try moving the S200 closer to the router.

## Wall Mounting

The Airstream S200 can be wall mounted using the integrated 1/4 inch UNC threaded insert. Circled below.



The Monitor Audio Speaker Mount will also work with the S200.



## FREE YOUR MUSIC

### Use Airplay from your iOS-device

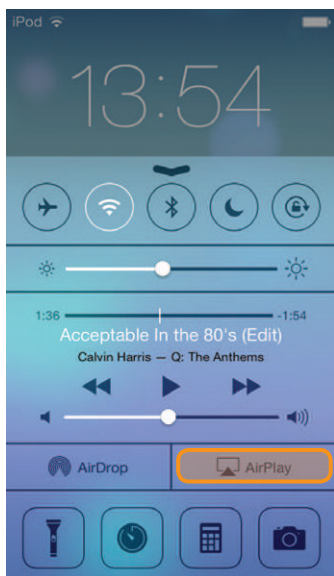
Before proceeding, please ensure the S200 is turned on from standby mode and is registered to the same wireless network as the device you will be playing back from.

The S200 will automatically change to AirPlay input when streaming is started if it isn't already selected.

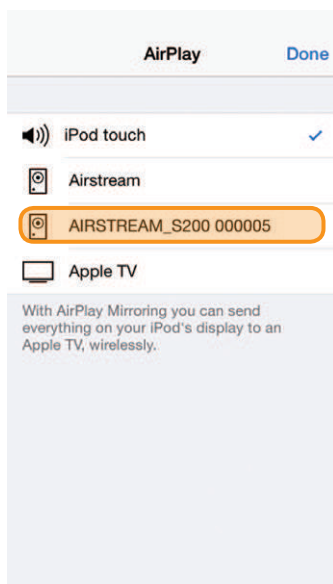
#### HINT

If the LED on the S200 is flashing, it is either initialising (Pattern 2#) or it is hunting for a wireless network (Pattern #1). In either state, the AirPlay logo may not be visible on the iOS-device.

1. Swipe up to reveal the Control Centre. You should see the AirPlay icon.



2. Press this and select S200 from the list, press done. The AirPlay logo will now be illuminated. This means that your device will be playing via AirPlay.

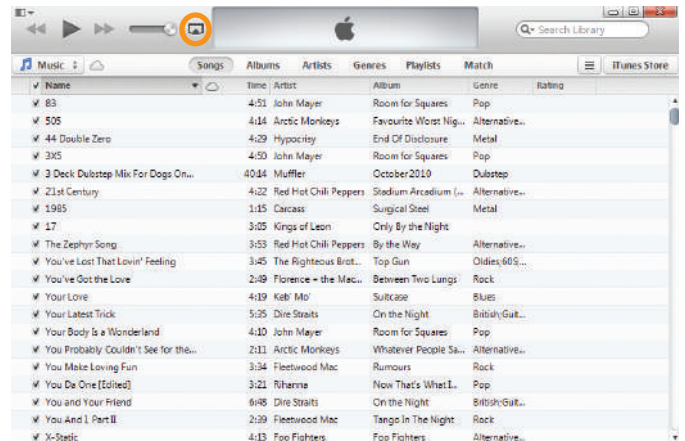


## Using AirPlay from iTunes

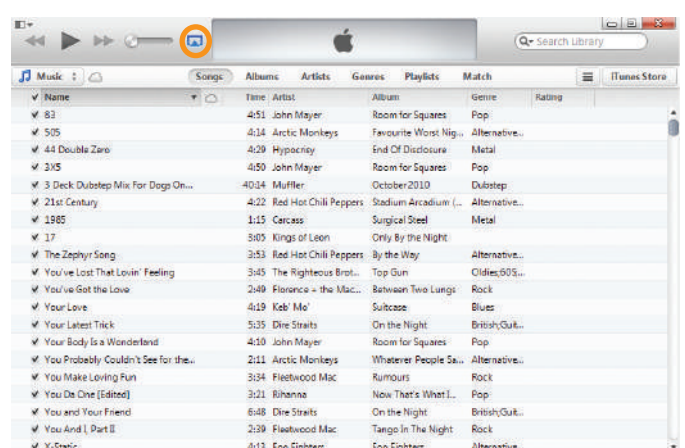
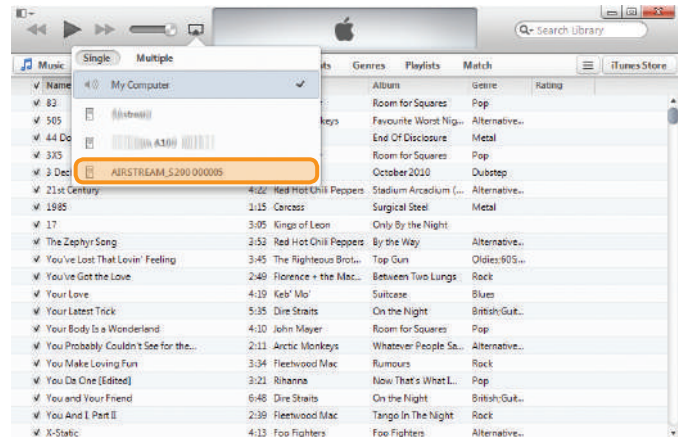
Before proceeding, please ensure the S200 is turned on from standby mode and is registered to the same wireless network as the device you will be playing back from. The Mac or PC can be connected wired or wirelessly to the same network as the S200.

The S200 will automatically change to Airplay mode if it isn't already selected.

1. On the PC/ Mac, open iTunes. The AirPlay icon will appear next to the volume slider (iTunes version 11.1.4 illustrated below), but only if it has found the S200 on the network.

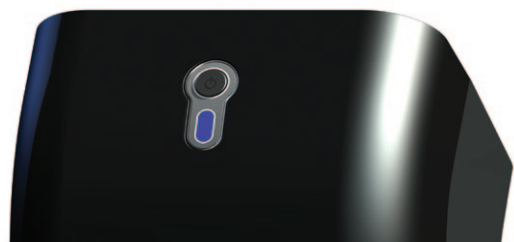


2. Click on the icon and select the Airstream S200 from the devices available. The AirPlay icon will then be illuminated blue.



Select the song you wish to play.

In both instances, the LED on the front of the S200 will be blue when in AirPlay mode. If it doesn't automatically change to AirPlay mode when songs start playing, press the input toggle button (item 6 on page 3) on the S200 to cycle inputs.



#### HINT

If the LED on the S200 is flashing, it is either initialising (Pattern 2#) or it is hunting for a wireless network (Pattern #1). In either state, the AirPlay logo may not be visible on the iOS-device.

## Playing via Bluetooth

Before proceeding, please ensure the S200 is turned on from standby mode.

1. On the S200 press the Input toggle button (item 6 on page 3) until the Bluetooth input is selected (Cyan) this will be flashing Pattern 2 while it searches for a paired device.

#### HINT

If the LED on the S200 is solid, it is already attached to a paired device within range. Disconnect this device and the LED will start to flash again. Only one device can be connected at any one time.



2. Go to the Bluetooth settings of your playback device and enable Bluetooth, select and connect to 'Monitor Audio S200..'. Once connected, the LED on the front of the S200 will change to solid Cyan. Please refer to your device's instructions for how to play to the S200.

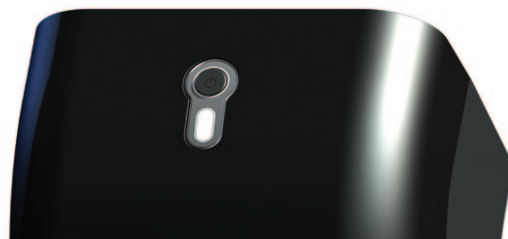
## Playing and Charging via the USB

Before proceeding, please ensure the S200 is turned on from standby mode. Please see the list of compatible devices on Page 2.

1. Connect the apple supplied USB lead to the S200 and your device. It will automatically start charging.



2. Press the Input toggle button on the S200 (item 6 on Page 3) until the USB source is selected (white LED).



3. Press play on your device.

## Play Another Device Using the 3.5mm Aux Input

Before proceeding, please ensure the S200 is turned on from standby mode.

1. Insert a standard 3.5mm stereo jack cable (sold separately) into the auxiliary input on the back of the S200 and the other end into the device you wish to play from.



2. Press the Input toggle button on the S200 (item 6 on Page 3) until the Auxiliary source is selected (green LED).



3. Press play on your device.

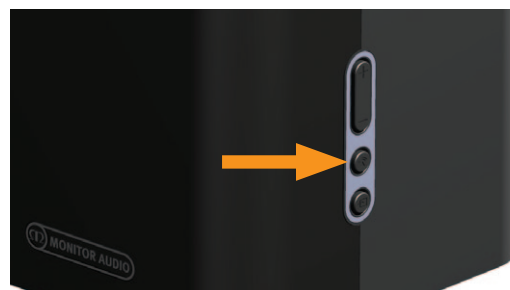
## Play Another Device Via DLNA

It is possible to stream to the S200 using a wireless device via DLNA (Digital Living Network Alliance), that isnt iOS enabled.

There are a number of third party apps that use the DLNA protocol, so please refer to the instructions for your particular application on how to stream to wireless devices.

The S200 will automatically select a DLNA streaming source unless an AirPlay source is already playing. AirPlay will always over-ride DLNA.

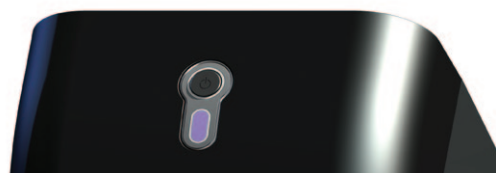
When in DLNA Streaming mode, the LED on the front will be blue (Airplay/ DLNA Mode) or purple (Airstream Direct). This can be manually selected by pressing the Wi-Fi input button which cycles between these two inputs sources (item 5, page 3).



Airplay/ DLNA:



Airstream Direct:



### HINT

You must be on the same network as the S200 for this to work; either having both devices connected to a Wifi router or connecting your DLNA device to the S200 in Direct mode.

For playback and streaming using a 3rd party app, please refer to their instructions.

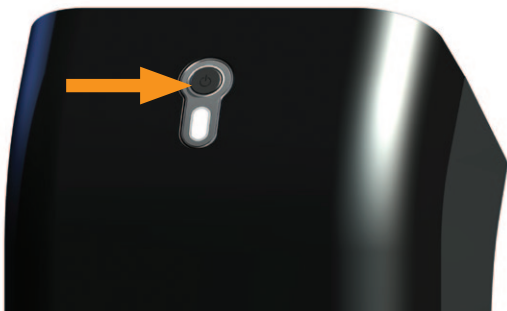
## Firmware Update

The S200 automatically searches for software updates whenever it is turned on (providing there is a connection to the internet). However, there are other ways of updating the firmware. These are manually via the internet or via a USB memory stick. Details of all methods are outlined below.

### Automatic Notification of Firmware Update

By default the S200 is set up to inform you a firmware update is available automatically.

1. After the S200 has gone through the initial boot up procedure and connected to the network (blue LED stops flashing), the LED will flash white slowly (Pattern #1) indicating that an update is available. This will time out after approx 20 seconds if no further action is taken.
2. Press and hold the standby button until the LED on the front is illuminated solid white.



3. Release the button and the LED will then go through various states and colour changes indicating different stages of the update process:  
**White** - Flashing fast.  
**Cyan** - Solid.  
**Green** - Update complete.
4. Once the update has been successfully completed, the S200 will reboot and so the LED will flash blue and go through the normal start up procedure described on page 4.

#### HINT

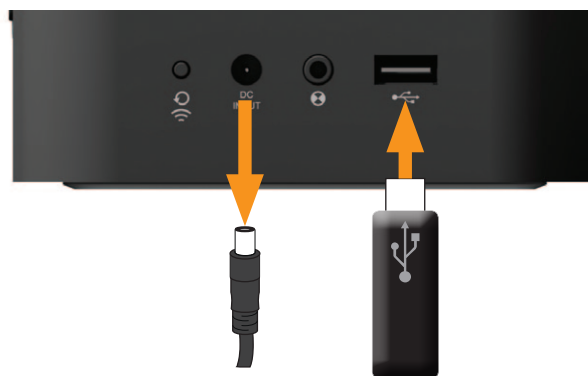
If the update sequence differs from above or the LED is red at the end instead of green, the update may have failed. Please retry using the USB update or web portal update. Also check the support section of [www.monitoraudio.com](http://www.monitoraudio.com)

## USB Firmware Update

To update the firmware by USB memory stick the update firmware needs to be downloaded first.

**NOTE:** The memory stick must be formatted as FAT32 and the file that is downloaded saved on to the root folder of the drive.

1. On your PC/ Mac open the internet browser and go to [www.monitoraudio.com](http://www.monitoraudio.com) and navigate to either the S200 page or the Support page. S200\_FW.fw
2. Download and “unzip” the update file. When it has been unzipped (decompressed) there will be 3 versions in there. Select the type appropriate for your region (US, JP, EU).
3. Rename the file to be **S200\_FW.fw** (this is very important) and save it to the USB stick. When it has been copied/ saved, safely remove the USB stick.
4. Remove the power lead from the S200 and insert the USB stick into the USB socket.



5. Reconnect the power and turn on the S200. The LED will flash blue while initialising and will then illuminate blue, purple, white or green depending on the mode it was turned off in. The LED will flash white slowly (Pattern #1) indicating that an update is available.
6. Press and hold the standby button until the LED on the front is illuminated solid white.
7. Release the button and the LED will then go through various states and colour changes indicating different stages of the update process:  
**White** - Flashing fast.  
**Cyan** - Solid.  
**Green** - Update complete.
8. Once the update has been successfully completed, the S200 will reboot and so the LED will flash blue and go through the normal start up procedure described on page 4.

#### HINT

If the update sequence differs from above or the LED is red at the end instead of green, the update may have failed. Please retry the USB update or try the web portal update. Also check the support section of [www.monitoraudio.com](http://www.monitoraudio.com)

# Web Browser Firmware Update

It is possible to update the firmware in the S200 via its web page. There are a number of ways to do this and these are listed below:

- i. Via Safari. If you have safari web browser installed, click on Bonjour and then the bookmarks tab. The S200 should appear as one of the bookmarks in Bonjour. Continue to step 1 below.
- ii. Via Computer on a Windows 7 PC. Navigate to the Computer (Start; Computer), and click on Network. Scroll to Media Devices and double click on AIRSTREAM\_S200 xxxxxx (Where xxxxxx is the last 6 digits of its unique MAC address). Continue to Step 1 below.
- iii. Via the Control Panel on a Windows 7 PC. Navigate to the Control Panel and select Hardware and Sound, and then Devices and Printers. AIRSTREAM\_S200 xxxxxx should be displayed under the Devices title. Double click to bring up the Properties window. Click on the UPnP tab and then the link next to "Webpage". Continue to Step 1 below.
- iv. Via any internet browser. This method can only be done if the IP address of the S200 is known. If you do not already know this, it can be found out by going to your router's control panel and looking under attached devices (or similar). Refer to the router's manual for help on this. Continue to step 1 below.
- v. Via any web browser. This method can only be done if the last 6 digits of the MAC address are known. In the address bar of the browser, type in the following:  
http://airstream-s200-xxxxxx.local./index.asp  
Where xxxxxx is the last 6 digits of the MAC address.

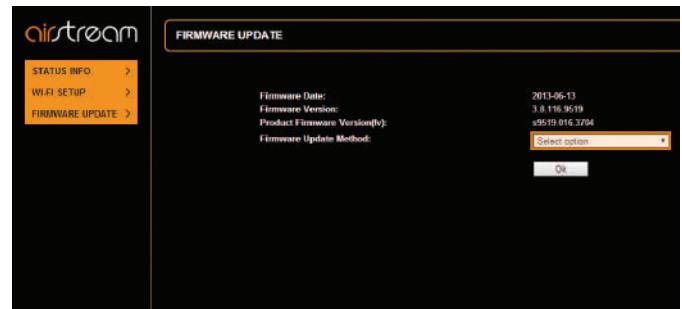


**WARNING:** Do not, at any point during the update procedure remove the power from the S200, or click back on the web browser. Follow the on screen instructions and the instructions in this manual.

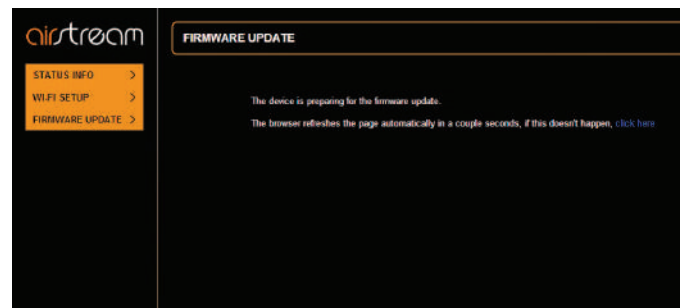
- 1. Download the updated firmware from the Airstream website [www.monitoraudio.com](http://www.monitoraudio.com) and save it to your computer.
- 2. Connect to the S200 using one of the 5 methods outlined above and click on the Firmware Update tab.



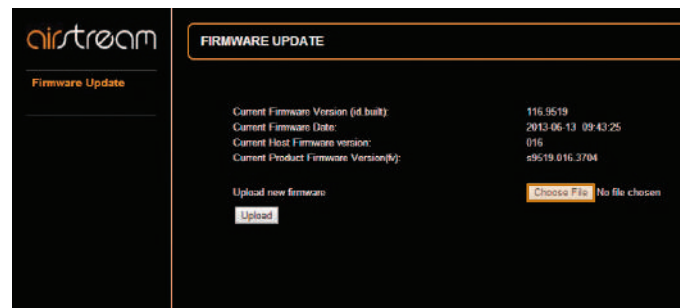
- 3. Click on the drop down menu next to 'Update Method' and select the option "Firmware Update From Network".



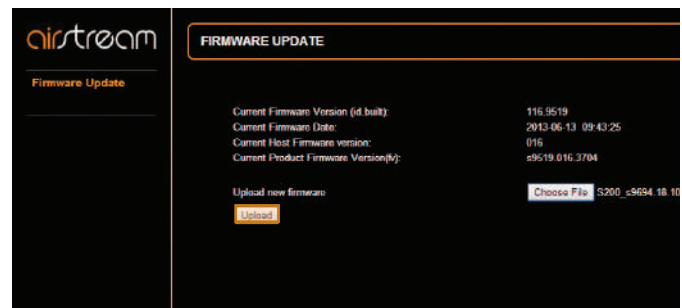
- 4. Click on Ok. The page will change with a note to say it should refresh in a couple of seconds, or click a link. Click the link (if it doesn't refresh). The LED on the S200 will flash white slowly and then turn solid white.



- 5. Next, click on "Choose File" and navigate to the location the updated firmware file was saved to. Select it and click open.

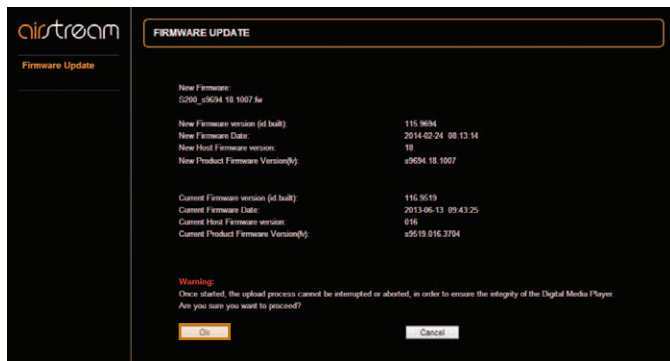


- 6. Click on "Upload".





7. Check the details of the file on the web page and click "OK".



8. The web page will now change showing the progress of the update. At the same time, the LED will go through various states and colour changes indicating different stages of the update process:



**NOTE.** Do not refresh the webpage at any point during the update.

**White** - Flashing fast.

**Cyan** - Solid.

**Green** - Update complete.

Once the update has been successfully completed, the S200 will reboot and so the LED will flash blue and go through the normal start up procedure described on page 4.

#### HINT

If the update sequence differs from above or the LED is red at the end instead of green, the update may have failed. Please retry using the USB update or web portal update again. Also check the support section of [www.monitoraudio.com](http://www.monitoraudio.com)

9. The update is now complete. Close the web browser.

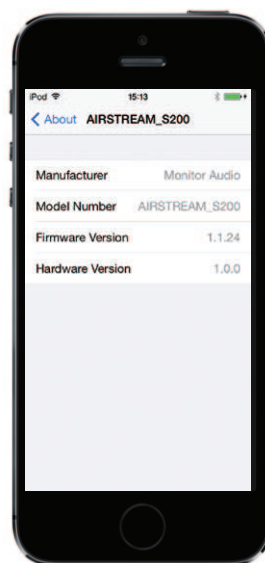
## Checking Firmware Version

It is possible to see what version of firmware and software the S200 is running. This may be needed when contacting Monitor Audio.

1. With the S200 powered up and out of standby mode, connect your iOS-device to the USB port of the S200 using the Apple supplied lead.
2. On the device, go to Settings, then General and then About.



3. In the About section scroll down the screen to Airstream S200.
4. Select Airstream S200 and you will see a screen showing the Manufacturer, Model, firmware version and hardware version.



# LED Colour Matrix

The table below shows the various colours and flash patterns associated with the front LED and their meanings.

1	.	.	.	2	.	.	.	3	.	.	.	4	.	.	.	Description	Function
<b>Start-up Sequence</b>																	
																Fast Flashing Blue	Initialising
<b>Normal Operation</b>																	
																Fast Flashing Blue	Wifi Connecting
																Blinking Red	No Wifi Connection
																Solid Blue	Airplay/ DLNA Mode
																Solid Cyan	Bluetooth
																Solid Green	Auxilliary Source
																Solid White	Digital USB Source
																Fast Flashing Purple	Entering Airstream* Direct Mode
																Solid Purple	Airpstream* Direct Mode
																Blinking White	Airstream* Connect mode
<b>Firmware Update</b>																	
																Slow Blinking White	Update Available
																Solid White	Initialising Update
																Fast Flashing White	Updating Firmware
																Solid Cyan	Updating AirPlay Module
																Solid Red	Update Failed

# LED Flashing Patterns

The table below shows the names of the flash patterns associated with the LED on the front of the S200.

250ms	250ms	250ms	250ms	250ms	250ms	250ms	250ms	250ms	250ms	250ms	250ms	250ms	250ms	250ms	250ms	250ms	250ms	250ms	250ms	Pattern Number
																			#1	
																			#2	
																			#3	
																			#4	

	<b>S200</b>
<b>Frequency Response</b>	80Hz - 20kHz
<b>Maximum SPL</b>	94dB
<b>Power Output (RMS)</b>	Bass: 2 x 20 watts (<1% THD+N, 100Hz) Tweeter: 1 x 20 watts (<2% THD+N, 10000Hz)
<b>Drive Unit Complement</b>	2 x 3" (76mm) C-CAM® Cone Bass Driver 2 x 3/4" (19mm) C-CAM® Gold Dome Tweeter
<b>System Configuration</b>	2 Way, Rear ABR Loading
<b>Auxiliary Input Impedance/ Sensitivity</b>	10k Ohms/ 300mV
<b>Signal to Noise Ratio</b>	> 60dB
<b>DAC</b>	28 - 56 Bit dual precision
<b>Input Voltage</b>	100 - 240v for Power Adapter
<b>Amplifier Category</b>	Class D
<b>Power Consumption</b>	Standby: < 0.5W Rated: 70W
<b>Supported File Formats (AirPlay)</b>	AAC, ALAC, MPS
<b>Supported File Formats (Airstream)</b>	AAC, ALAC, MP3, FLAC
<b>Wireless Network Protocol</b>	802.11b/g
<b>Electrical Approvals</b>	ETL/ CE/ Fcc/CB/ ErP/ Wi-Fi/ Wi-Fi WMM/ Bluetooth/ Apple MFi Certified
<b>Dimensions (each) (H x W x D)</b>	274 x 120 x 137mm (10 <sup>13/16</sup> x 4 <sup>3/4</sup> x 5 <sup>3/8</sup> " )
<b>Colour/ Finish</b>	Charcoal Grey with Black Grille Cloth White with Light Grey Grille Cloth
<b>Weight (each)</b>	2.25Kg (5lb 4oz)

NO REMOTE CONTROL & COIN/ BUTTON CELL BATTERY EQUIPPED WITH Airstream S200.  
Monitor Audio reserves the right to alter specifications without notice.



iPhone, iPod, iPod classic, iPod nano, iPod shuffle, and iPod touch are trademarks of Apple Inc., registered in the U.S. and other countries. iPad is a trademark of Apple Inc.



“Made for iPod” and “Made for iPhone” mean that an electronic accessory has been designed to connect specifically to iPod or iPhone, respectively, and has been certified by the developer to meet Apple performance standards. Apple is not responsible for the operation of this device or its compliance with safety and regulatory standards.



© 2013 CSR plc and its group companies.  
The aptX® mark and the aptX logo are trade marks of CSR plc or one of its group companies and may be registered in one or more jurisdictions.

## Trouble Shooting

If experiencing problems with the Airstream S200, there are some quick and easy checks, which may help to solve these problems.

### Unable to Connect to the Wireless Network

- Check if your Wi-Fi router is Wi-Fi 802.11b/g certified. The S200 is not compatible with N Class routers. If your Wi-Fi router is Wi-Fi 802.11n, please ensure that it is in 802.11b/g mode. The S200 is not able to talk to routers that are 802.11n only.
- Ensure your router is DHCP enabled.
- Keep away from potential sources of interference which may affect Wi-Fi signal, such as microwave ovens.
- If you fail to use your PC for Wi-Fi network setup, check whether your PC is using a Wi-Fi network. You cannot use Ethernet connection for AirPlay network setup.
- Make sure that the SSID name of the router consists of alphanumeric characters, with no space or special characters like %/#/\* inserted. It must also not be hidden.
- Check that there are enough spare IP addresses available on your router. Some limit the number of devices that are allowed on the network

### No Sound

- Check the volume, source and play/ pause settings.
- Check that the mains power lead is connected to the S200 and the mains power socket and is switched on at the wall.

### The S200 is Nonresponsive

- Check that the mains power lead is connected to the S200 and the mains power socket and is switched on at the wall.
- Remove the power from the S200, wait for the LED to go out and then reconnect the power.
- Check that it is connected to the same wireless network as your device.
- Check you are running the latest version of firmware. Refer to page 15.

### No Sound through Bluetooth

- Check that your streaming device is Bluetooth enabled and paired with the S200.
- If you cannot find the S200 you may need to enable the discovery of devices.
- If audio is breaking up, reduce the distance from the S200.

### Occasional Breaking up of AirPlay Music Playback

- Move the S200 closer to your Wi-Fi router.
- Avoid using Wi-Fi channel which is overlapped by the nearby Wi-Fi network.
- Check if your network speed is fast enough (in cases where multiple devices share the same router, the AirPlay performance may be affected). Turn off the other devices connected to your router.
- Enable the Quality of Service (QoS) option (if available on the Wi-Fi router).
- Turn off other Wi-Fi routers or range extenders to try to diagnose a possible faulty one.

### No AirPlay Icon on my iTunes Host Device

- Make sure the S200 is connected to the same Wi-Fi network as the host device
- It can sometimes take up to 30 seconds for the S200 to appear on the network. Try leaving iTunes for a bit to see if it appears.

### AirPlay Connection Failed with Mac or PC

- Temporarily disable the firewall and security software to see whether it blocks the ports that AirPlay uses to stream content. Refer to the help documentation for your router/ firewall/ network security to unblock the ports used by AirPlay.
- When you use iPod Touch/iPhone/iPad/Mac/PC for AirPlay, if the music play breaks or stops, try to restart your iPod Touch/iPhone/iPad, iTunes or S200.
- Video streaming or FTP downloads may overload your router and therefore may cause interruptions during AirPlay music play. Try to reduce the load of your router.

If still experiencing difficulties after making the suggested checks, please call the help desk for further assistance. The help desk is open from 9.00am to 5.00pm (GMT), Monday to Friday (excluding Bank Holidays) and can be contacted on +44(0) 1268 798567. Alternatively contact the store you purchased the S200 from.

## Factory Reset

Should the situation arise where you need to carry out a factory reset because of problems or difficulties with the S200, follow the steps below.

1. With the S200 powered up and out of standby mode, press and hold the Wi-Fi Sharing Button for approximately 12 seconds (Item 7 on page 3).



2. The S200 will have all its settings reset when it goes into standby mode.

### HINT

When carrying out a factory reset, the Bluetooth settings/ memory will not be erased.

## Owner Information

### Product Details

Model **Airstream S200**

Product Serial No .....

Date of Purchase .....

IP Address on Network .....

Wi-Fi MAC Address of S200 .....

Bluetooth MAC Address of S200 .....

### Dealer Details

Dealer Name .....

Address .....

.....

Town .....

Post code .....

Country .....

E-mail address .....



Monitor Audio Ltd.

24 Brook Road

Rayleigh, Essex

SS6 7XJ

England

Tel: +44 (0)1268 740580

Fax: +44 (0)1268 740589

Email: [info@monitoraudio.co.uk](mailto:info@monitoraudio.co.uk)

Web: [www.monitoraudio.com](http://www.monitoraudio.com)

**Designed & Engineered  
in the United Kingdom**

**Made In China**

Version 1. 2014